

# XL Miner: User Manual

November 2016

## Table of Contents

Administration .....	2
Dashboard 1.....	2
Dashboard 2.....	5
Dashboard 3.....	8
Dashboard 4.....	12
Dashboard 5.....	13
Dashboard 6.....	14
Dashboard 7.....	16
Dashboard 8.....	18
Dashboard 9.....	20
Dashboard 10.....	21
Dashboard 11.....	23
Dashboard 12.....	24

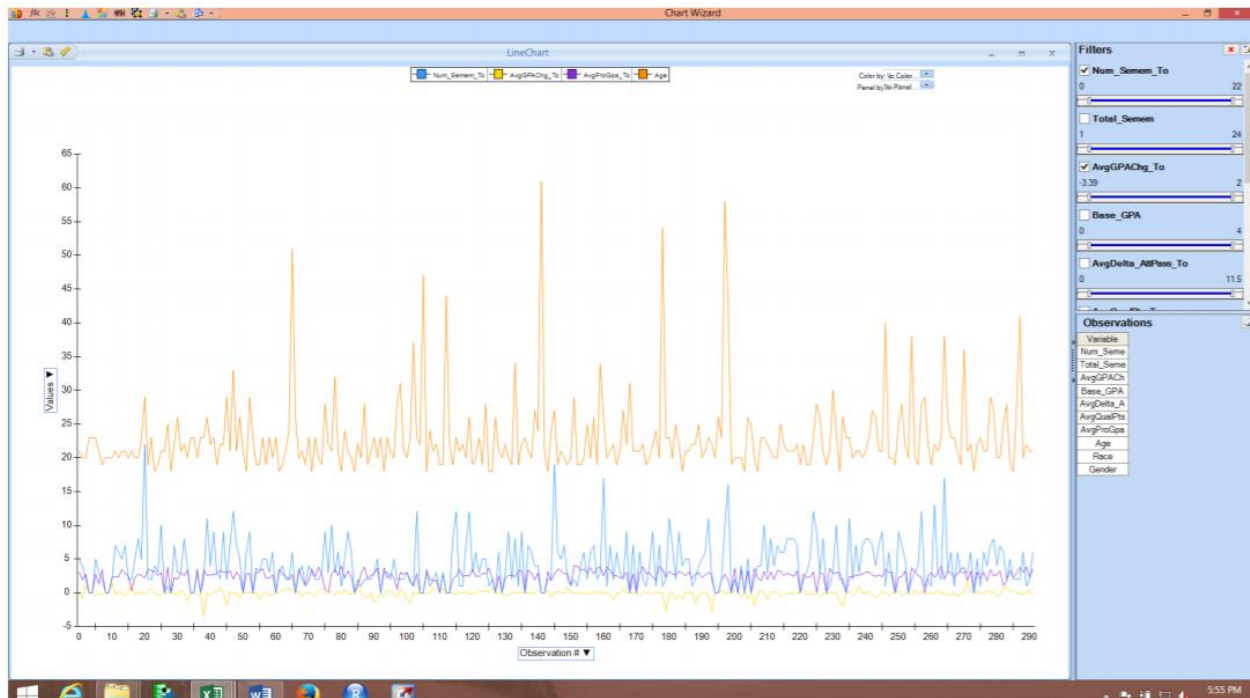
## Administration

Follow the instruction provided by FrontLine Systems to download XL Miner. Course and book code will be included.

As you open Excel you will see XL Miner tab on the top ribbon.

## Dashboard 1

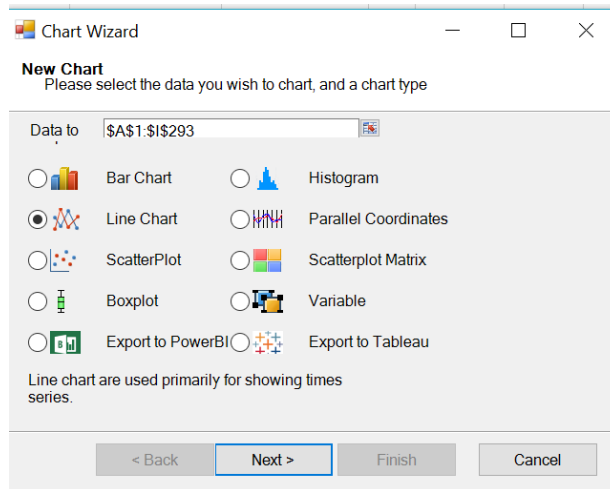
Goal:



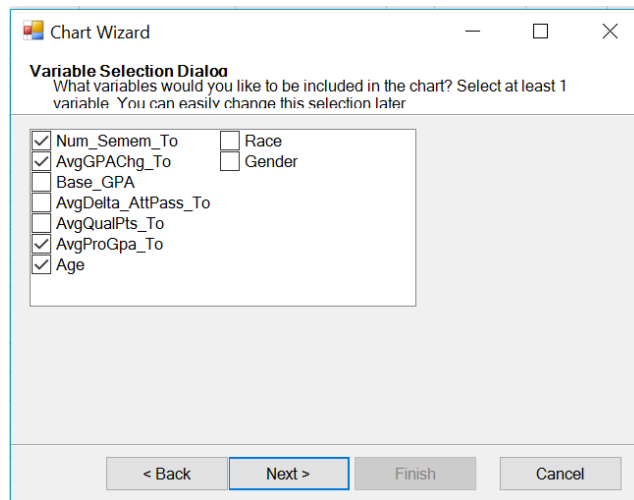
1. Open your Computations file in Excel. Go to XL Miner tab. Then click Explore -> Chart Wizard

	Num_Semem_To	Base_GPA	AvgDelta_AttPass_To	AvgQualPts_To	AvgProGpa_To	Age	Race	Gender
1	2.9100	0.6000	31.2060	3.0660	21	White	Female	
2	2.3700	2.2500	16.5075	1.9175	20	White	Female	
3	2.4400	0.0000	22.5050	2.7650	20	White	Female	

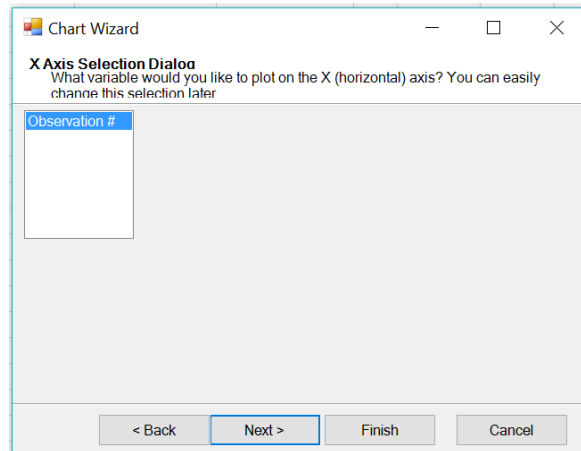
- You will be prompted to choose your chart type. Choose Line Chart for this Dashboard. Click Next.



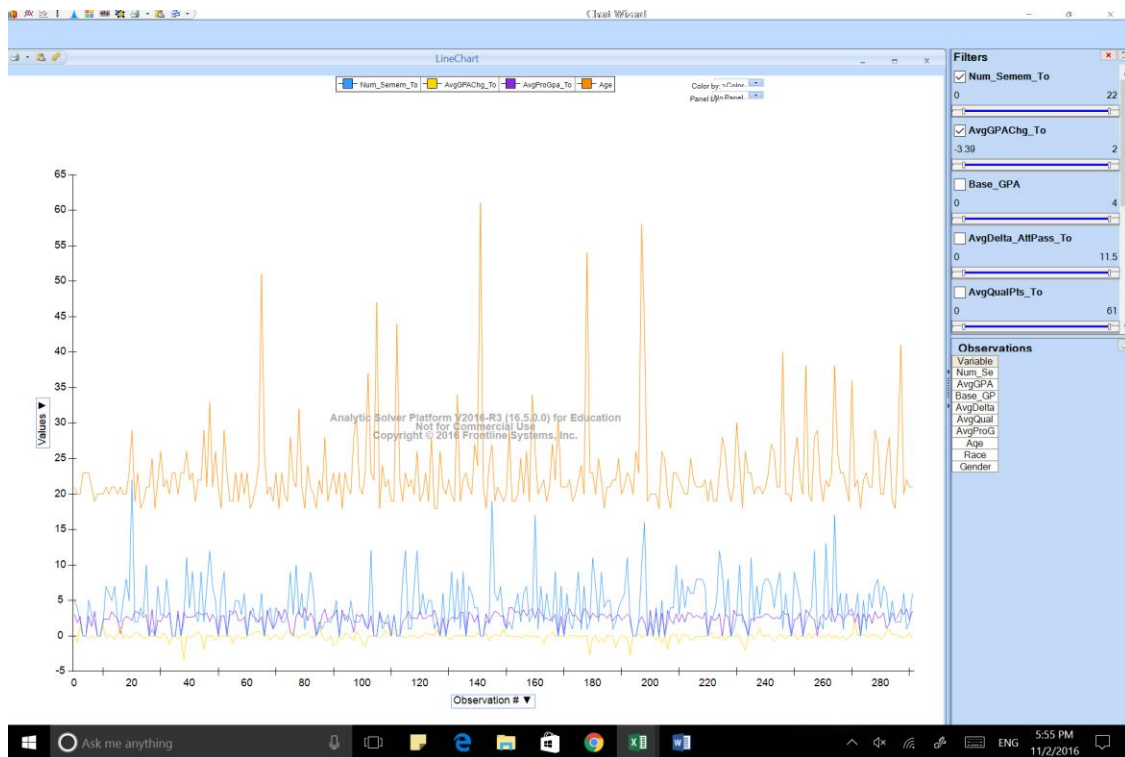
- Now you need to select your variables. For this dashboard, choose the following variables and click Next.



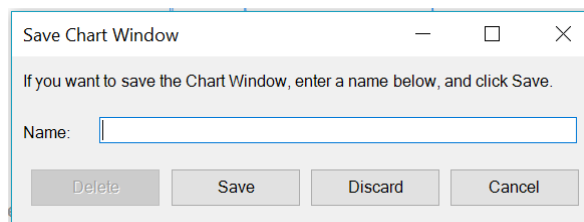
- You will be prompted to choose X- axis. Choose Observations # and click Finish.



- You will see the goal dashboard displayed



- When you are done with this chart, you can close it by clicking X in the top right corner. You will be given an option to either save or discard the chart.

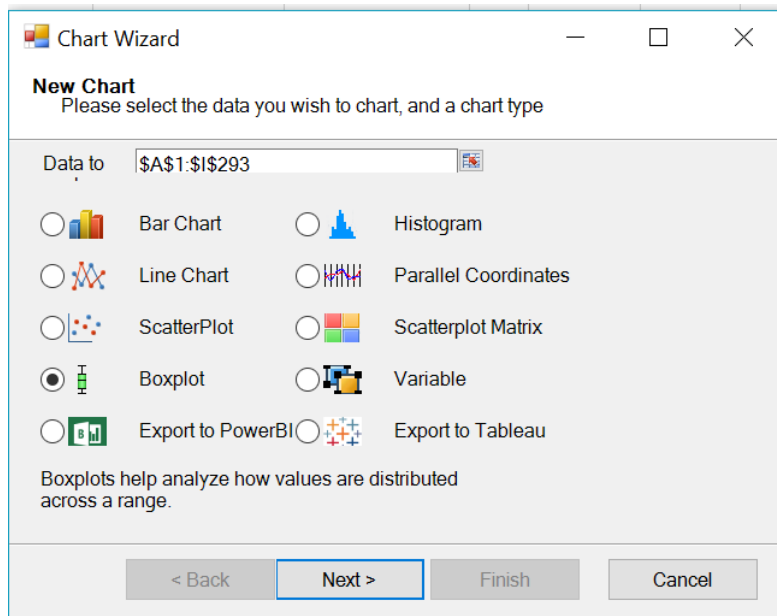


## Dashboard 2

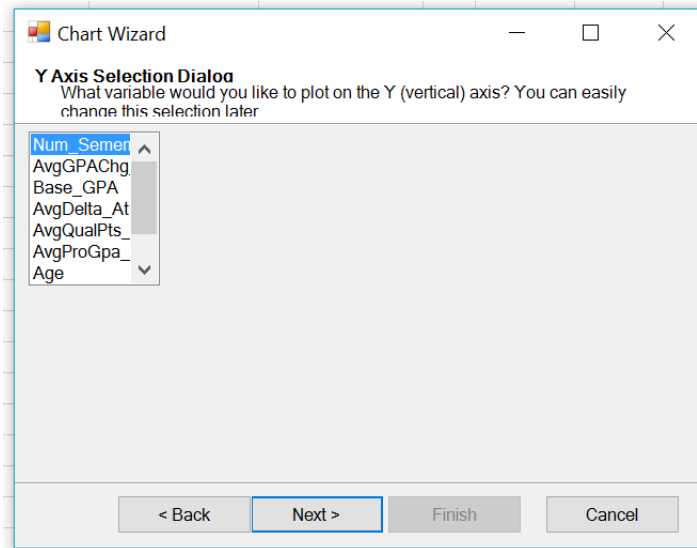
Goal:



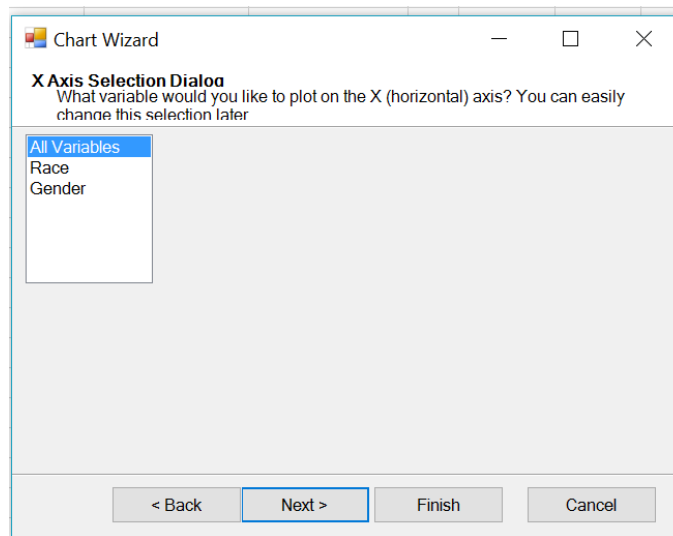
1. Open your Computations file in Excel. Go to XL Miner tab. Then click Explore -> Chart Wizard
2. Choose Boxplot and click Next.



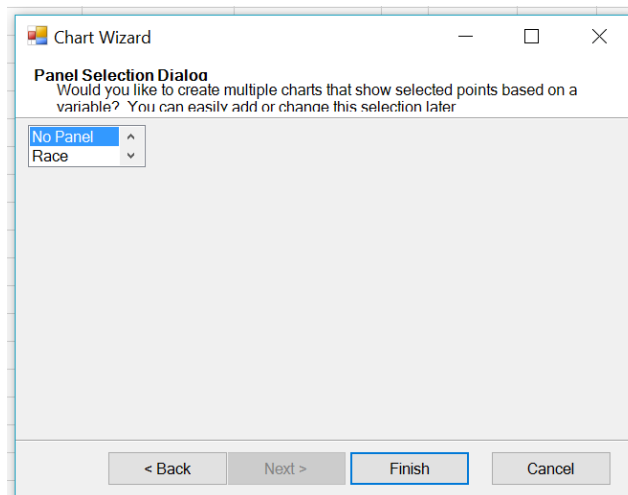
3. Choose Num\_Semem\_To and click Next again.



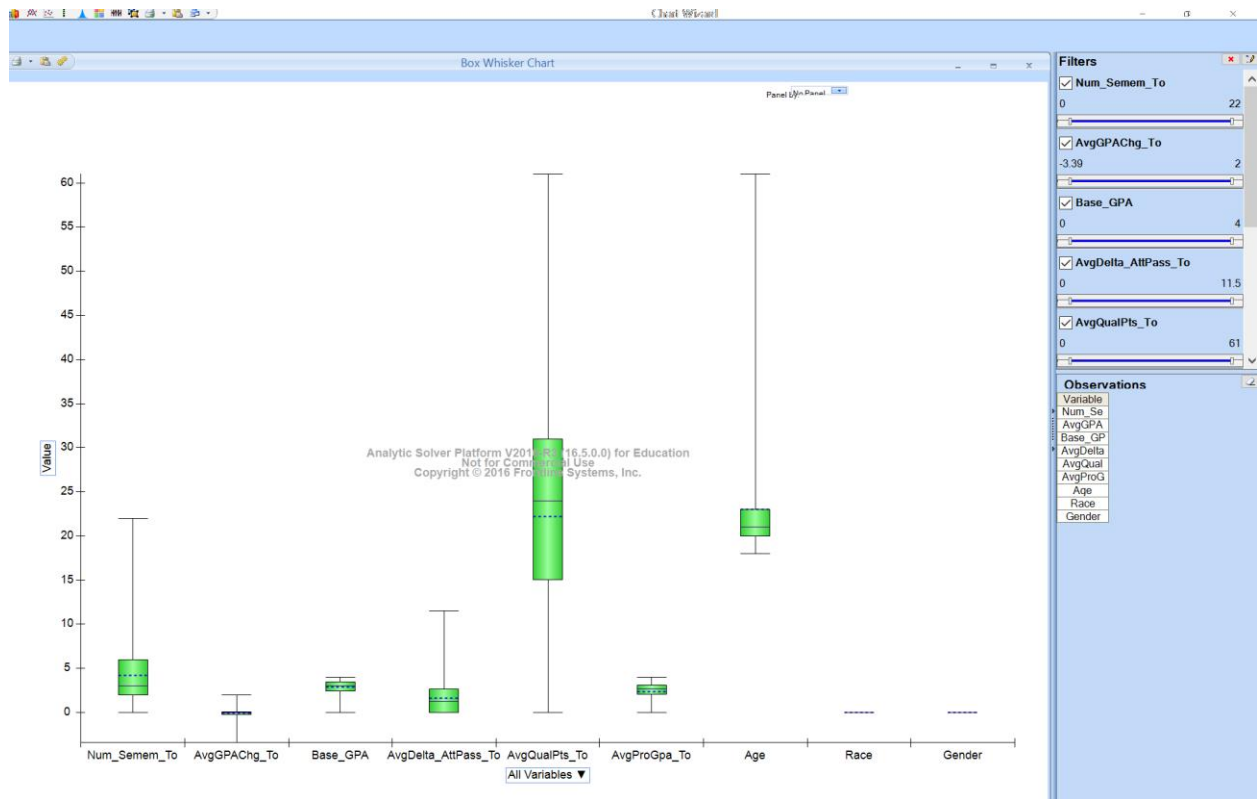
4. Choose All Variables and click Next



5. Choose No Panel and click Next

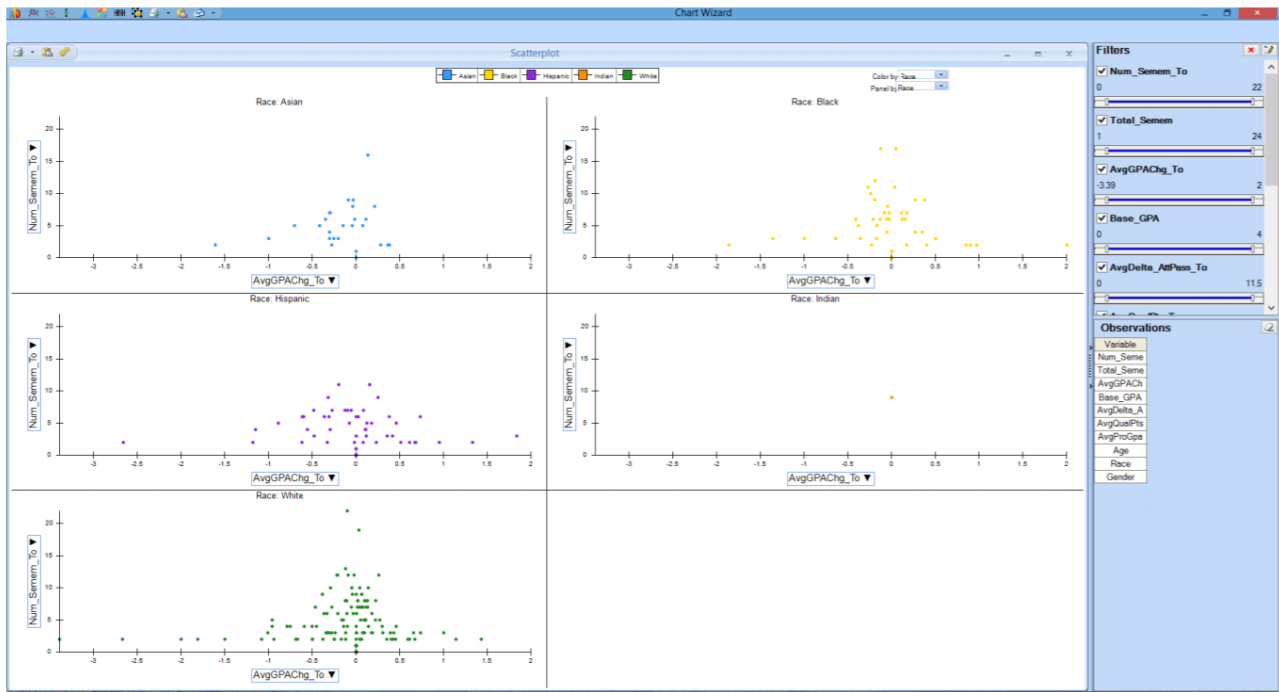


6. Click Finish on the next window. The final Dashboard will be displayed as follows

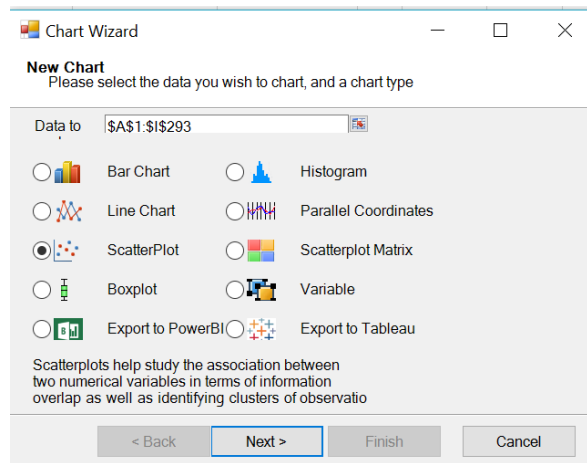


# Dashboard 3

Goal:

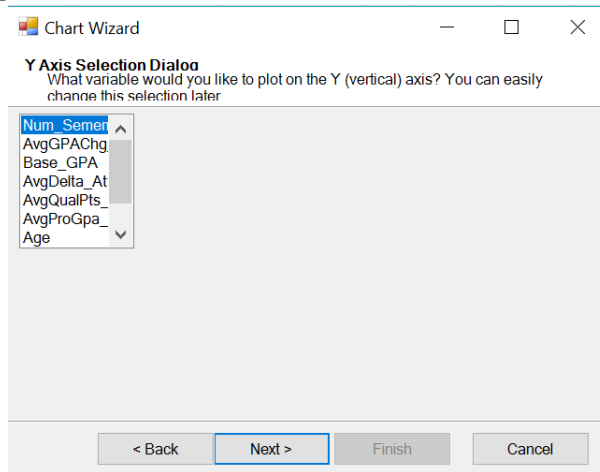


1. Go to XLMiner tab -> Explore -> Chart Wizard
2. Choose Scatterplot option. Click Next.

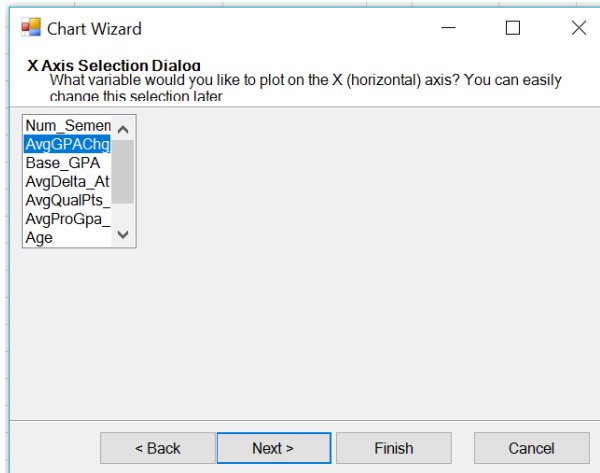




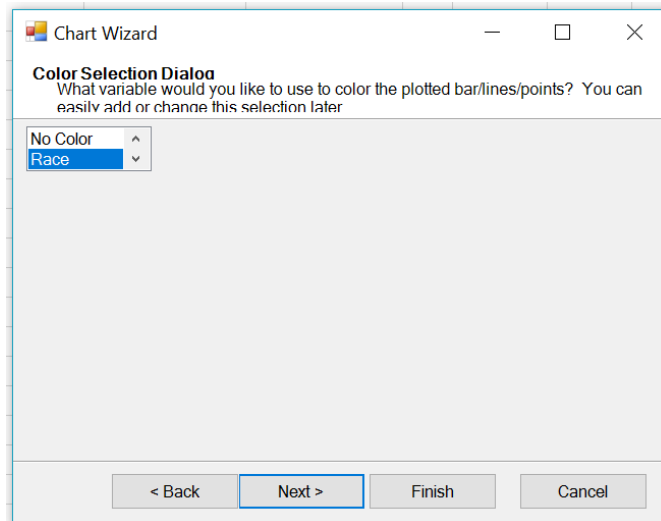
3. Choose Num\_Semem\_To as Y-axis. Click Next.



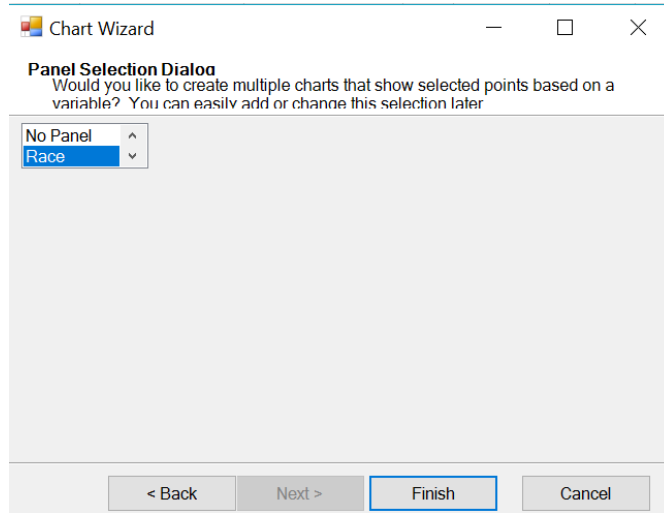
4. Choose AvgGPACHg\_To as X-axis. Click Next.



5. Choose Race in Color Selection Dialog. Click Next.



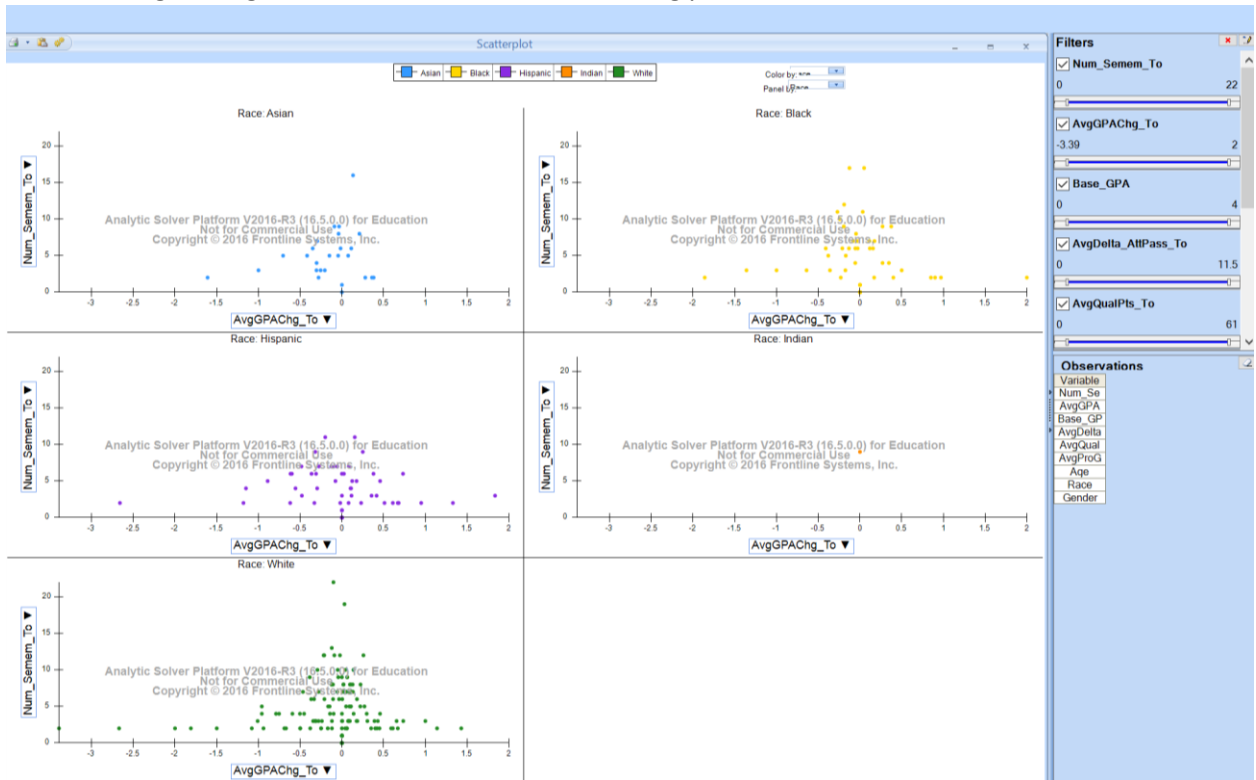
6. Choose Race in Panel Selection Dialog. Click Finish.



7. On the top center choose Color by Race

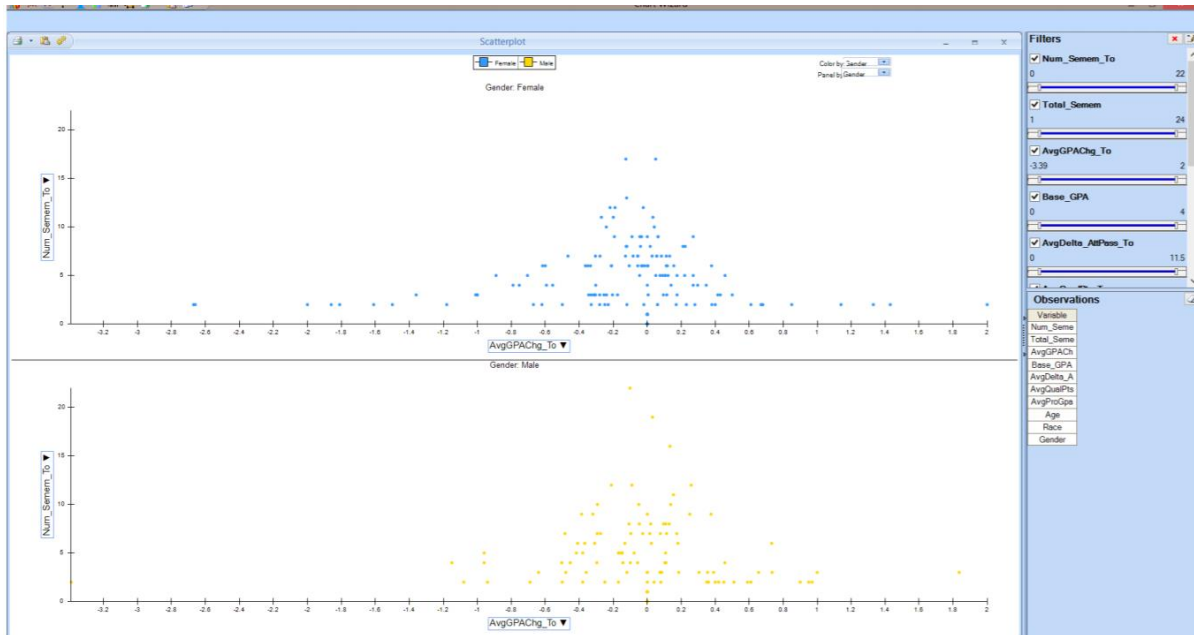


8. You will get the goal board as shown in the following picture

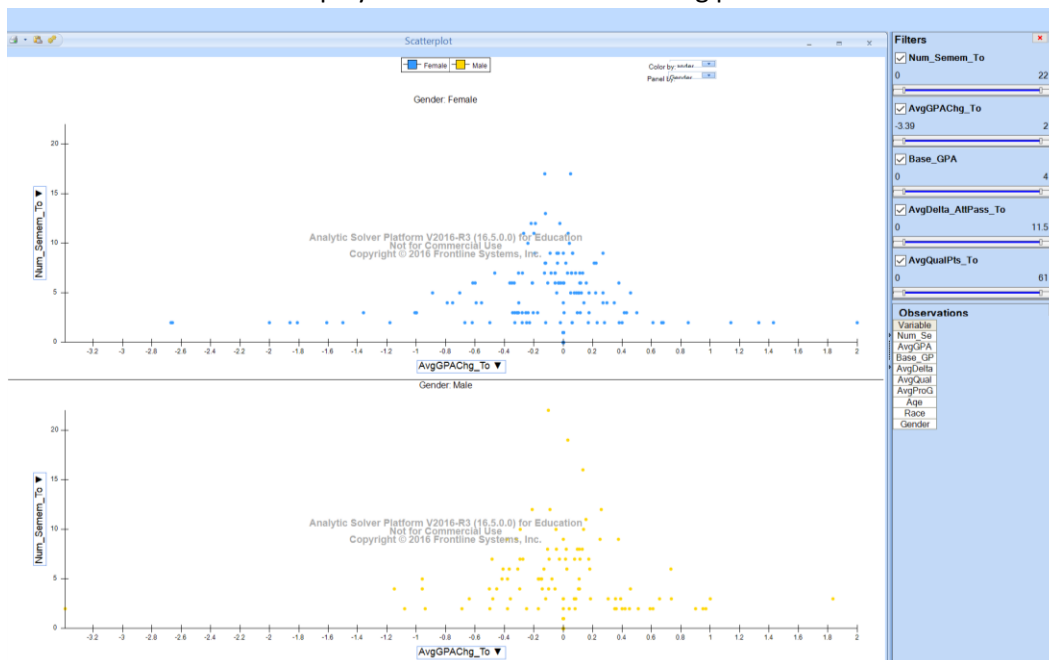


# Dashboard 4

Goal:



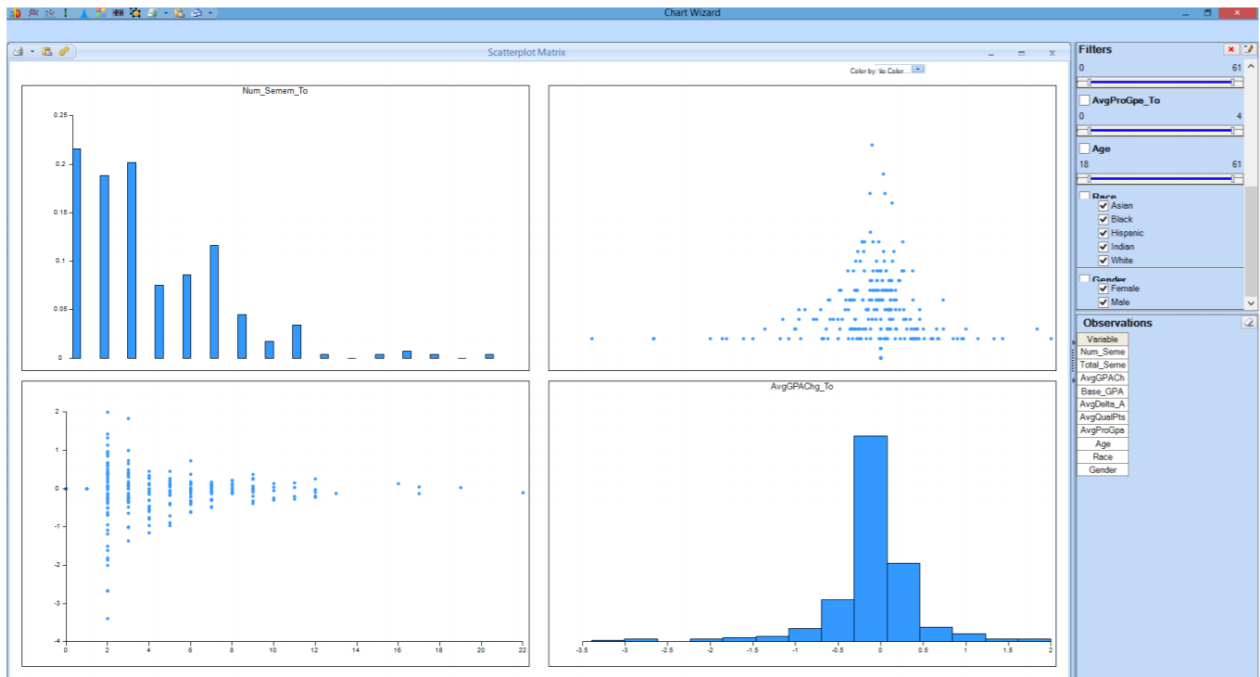
1. Go to XLMiner tab -> Explore -> Chart Wizard
2. Choose Scatterplot as chart type, and click Next
3. Choose Num\_Semem\_To as Y-axis, and click Next
4. Choose AvgGPACHg\_To as X-axis and click Next
5. For Color Selection Dialog choose Gender. Click Next.
6. For Panel Selection Dialog choose Gender Male as well. Click Finish.
7. Goal dashboard will be displayed as shown in the following picture:





# Dashboard 6

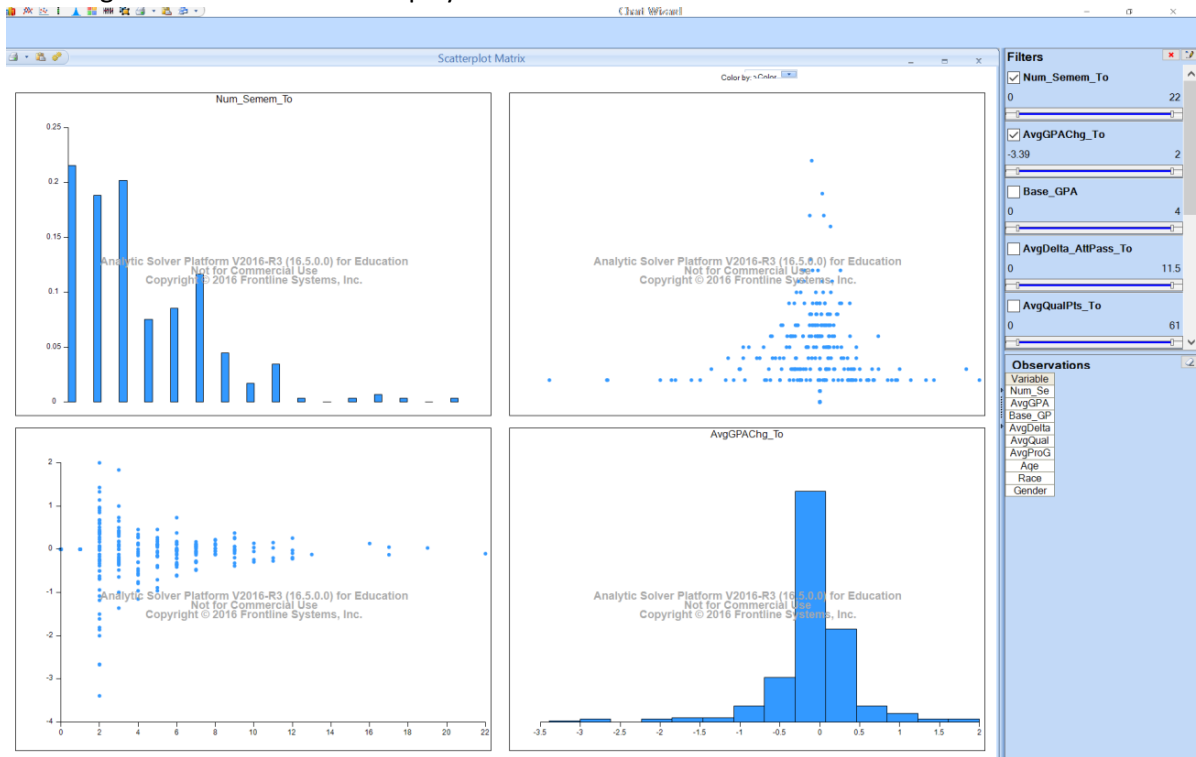
Goal:



1. Go to XLMiner Tab -> Explore -> Chart Wizard
2. Choose Scatterplot Matrix as Chart Type, click Next.
3. Choose Num\_Semem\_To and AvgGPAChg\_To as your variables. Click Finish.

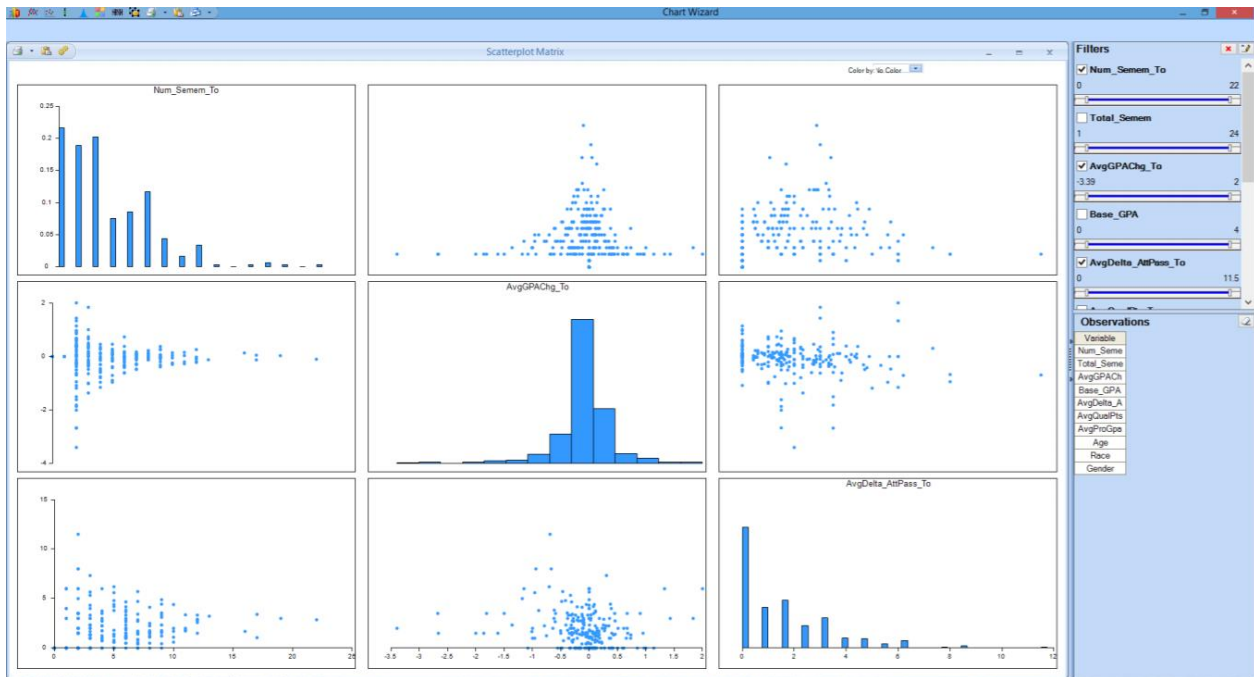
The figure shows a 'Variable Selection Dialog' window. The title is 'Variable Selection Dialog'. Below the title is the text: 'What variables would you like to be included in the chart? Select at least 2 variables. You can easily change this selection later'. There is a list of variables with checkboxes next to them. The variables are: Num\_Semem\_To (checked), AvgGPAChg\_To (checked), Base\_GPA (unchecked), AvgDelta\_AttPass\_To (unchecked), AvgQualPts\_To (unchecked), AvgProGpa\_To (unchecked), Age (unchecked), Race (unchecked), and Gender (unchecked). At the bottom of the dialog are four buttons: '< Back', 'Next >', 'Finish' (highlighted with a blue border), and 'Cancel'.

4. The goal dashboard will be displayed as follows:

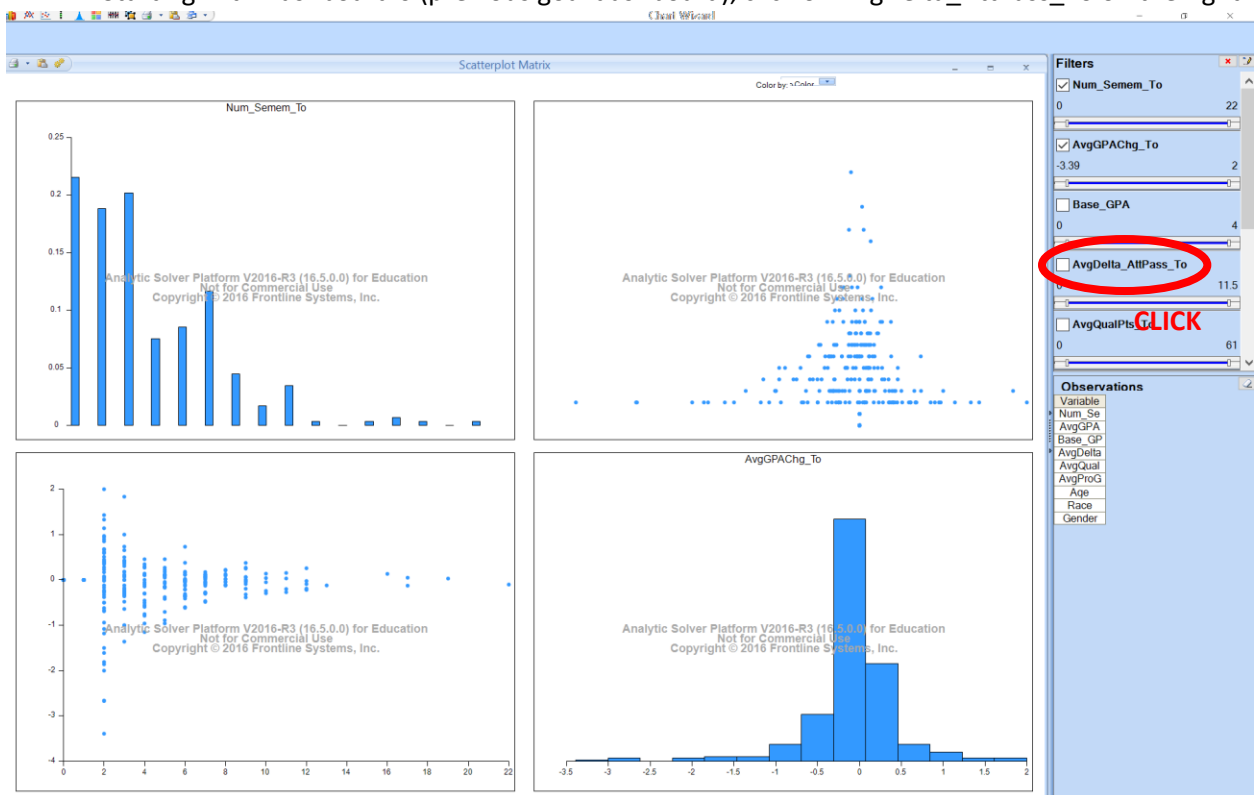


# Dashboard 7

Goal:



1. Starting with Dashboard 6 (previous goal dashboard), click on AvgDelta\_AttPass\_To on the right.





2. You will see your goal dashboard displayed as follows:

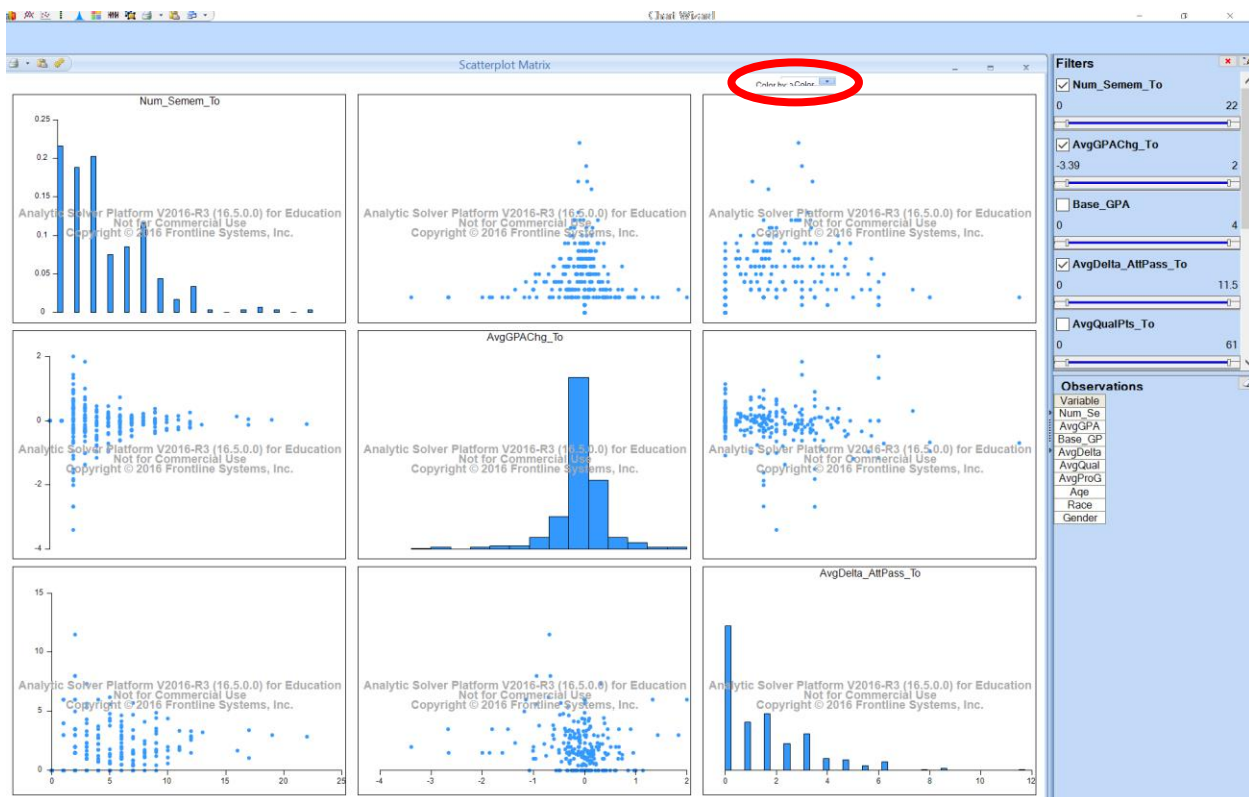


# Dashboard 8

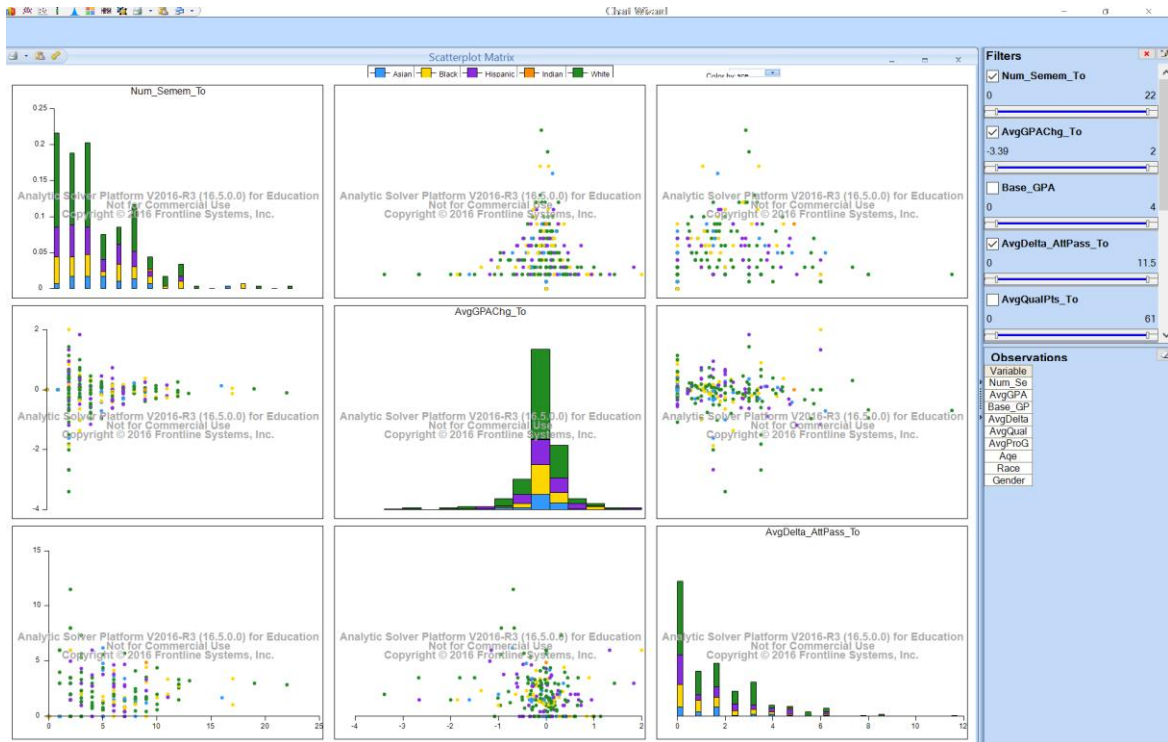
Goal:



1. Continuing on from Dashboard 7, on the top center dropdown choose Sort by Race.



2. Your goal dashboard will be displayed as follows:



# Dashboard 9

Goal:



1. Starting from Dashboard 8, go to the top center dropdown menu again. Choose Sort by Gender. Your goal dashboard will be displayed as follows:

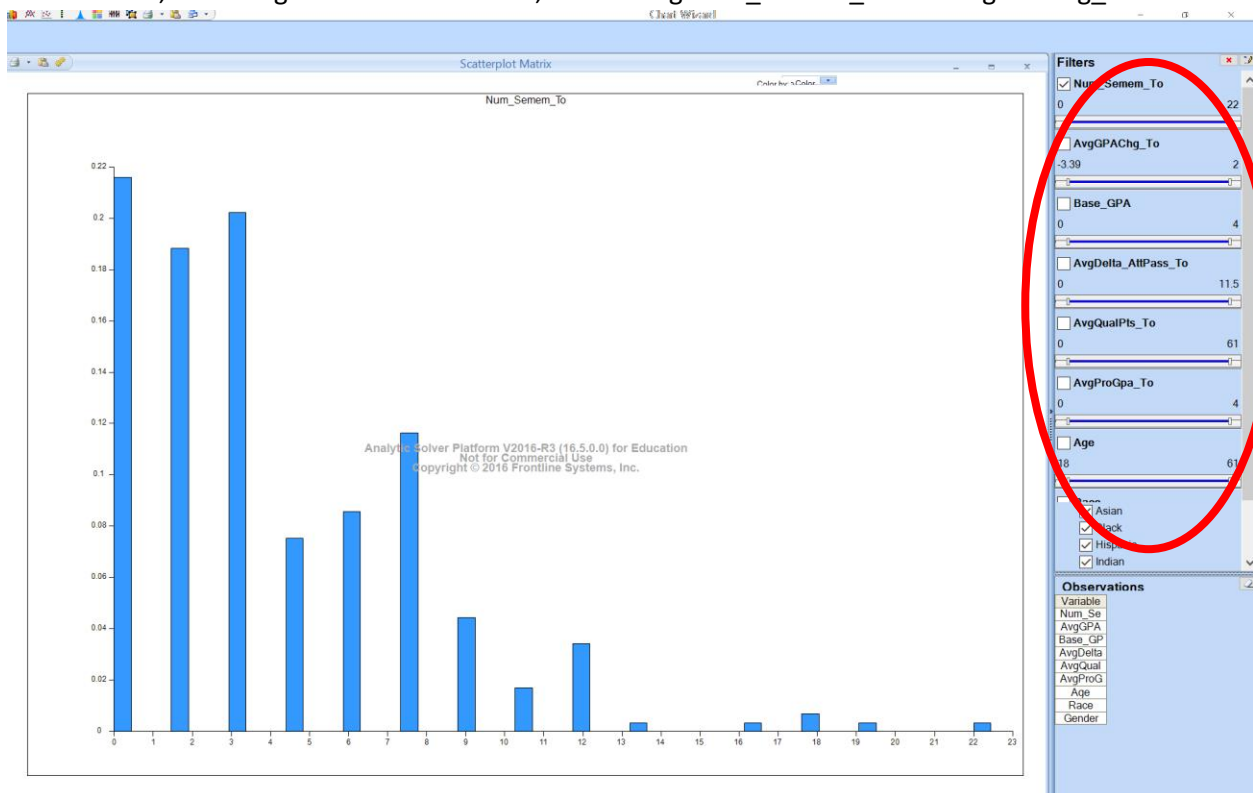


## Dashboard 10

Goal:



1. Now we will use different variables for the scatterplot matrix. First, choose No Color in the Sort By dropdown menu (top center).
2. Next, on the right-hand side console, unclick AvgDelta\_AttPass\_To and AvgGPACHg\_To.



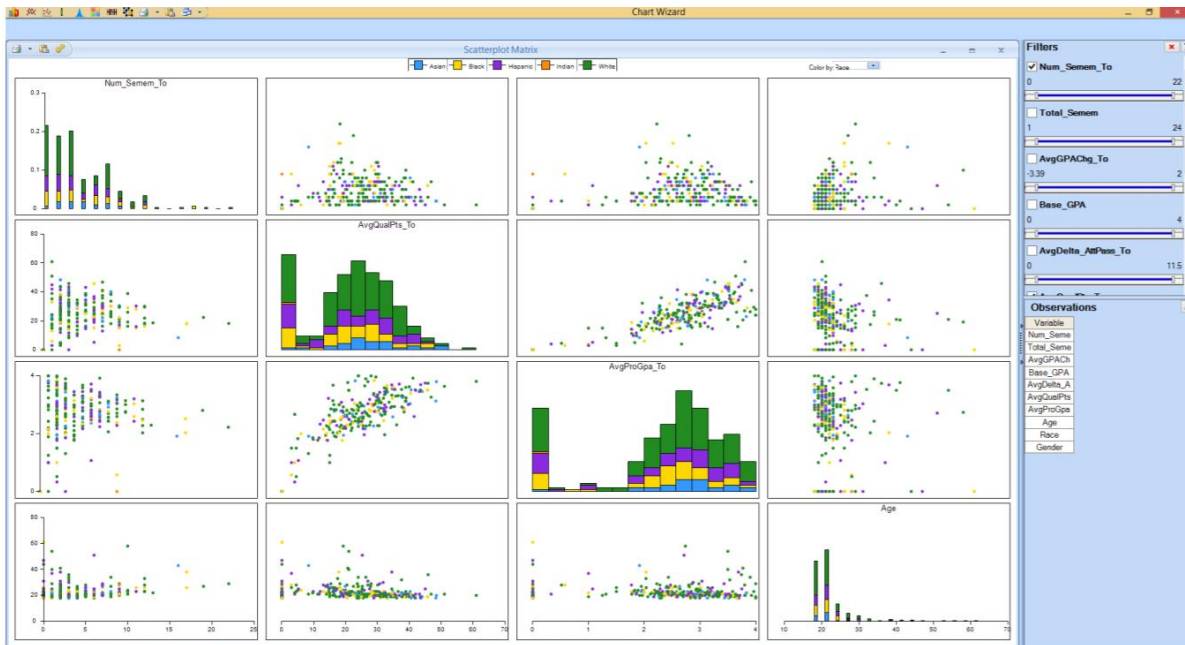
3. Now, on the same console choose AvgQualPts\_To, AvgProGpa\_To and Age.

#### 4. Your goal dashboard will be displayed as follows:



# Dashboard 11

Goal:



1. Starting from Dashboard 10, on the top center choose Sort by Race from the dropdown menu. The goal dashboard will be displayed as follows:



# Dashboard 12

Goal:



1. Starting from Dashboard 11, on the top center dropdown menu choose Sort by Gender. You will receive the goal dashboard displayed as follows:

